

# CUTTING IT DOWN TO SIZE

From Germany to Japan, the results are in on the Shrink This House competition

BY TALI JAFFE AND JOSELLE GALIS-MENENDEZ PHOTOS BY ROBIN HILL

Everyone and everything is going green. You can't turn on the news or open a magazine, ahem, without seeing some play on the phrase. We thought the timing was right for a competition, our third, that challenged the current trend in big, bulging houses—modern, Mediterranean, or otherwise. Shrink This House asked our readers to transform a 5,687-square-foot, modern house in Miami Beach into a smaller, environmentally friendly one. And my, how you all listened!

Entries poured in from all over the world—Bali, Austria, Ireland, Germany, Colombia, Mexico, Japan...totaling more than 60. Of the original entries, 10 were presented to the panel which would determine a winner. The judges were Daniel Latour, who built and designed the Hibiscus Island house that was to be shrunk; the Miami-based architect Max Strang, who is a returning judge and



**SUPERSIZED**  
The original Hibiscus Island house is 5,687 square feet.

## THE JUDGES

From left to right:  
Max Strang, Daniel  
Latour, Jacob Brillhart  
and Sebastian Eilert



a contributing editor to *InsideOut*; the young, Miami-based architect Jacob Brillhart, who is also a professor of architectural design and drawing at the University of Miami; and the Miami-based German architect Sebastian Eilert, whose firm, Sebastian Eilert Architecture, focuses on sustainable architecture and consulting.

The foursome met at the W Wine Bistro in the Miami Design District, spent hours poring over the entries and came up with a tie between the architect Wolfgang Maehr and the architect/interior designer team of Michael Atzenhofer and Johanna Varnicek. The judges also unanimously agreed upon two entries as having the best conceptual designs: "Cloud 9," by Kyoko Sasaki and Yohko Oowaku, and the "Tree House," by Nikolay Nedev. You may remember Nedev as one of the winners of the last competition, Build in the Bay.

Here, a closer look at the winning entries and what the judges had to say about them.

THANK YOU W WINE BISTRO FOR HOSTING OUR EVENT

Winning entry by Michael Atzenhofer and Johanna Vanicek



**THE GLASS HOUSE**  
Judges wondered if the glass-and-louver design was eco-friendly enough.

"When you look at all the louvers and the geometry of the house it looks like it has a lineage to Florida's modern past, yet also has some relationship to the [original] house. This is more of a conceptual format...it doesn't just cut up the existing one."

—Max Strang

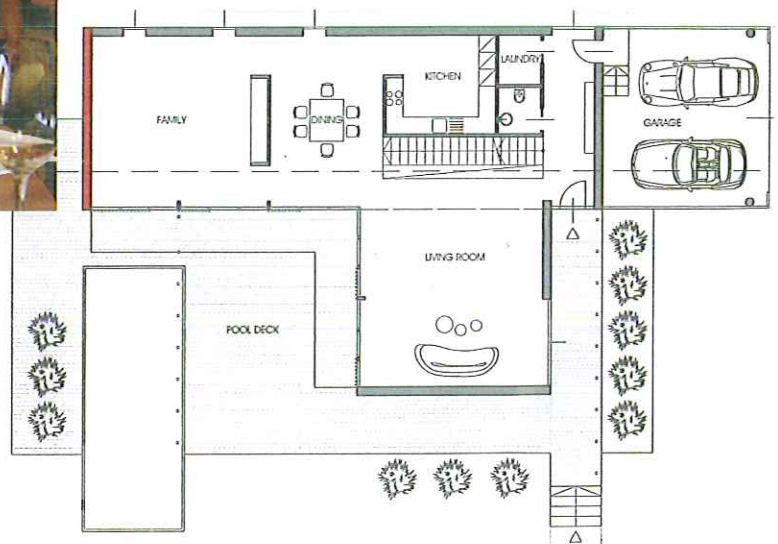


**A CRITICAL EYE**  
Strang takes in the entries, and the wine, at the judging tables.

"I like it for the floor plan because they keep the living space very attractive. What I don't like in this rendering is that it's too modern...you have no walls, only glass and columns; that for me is a little cold."

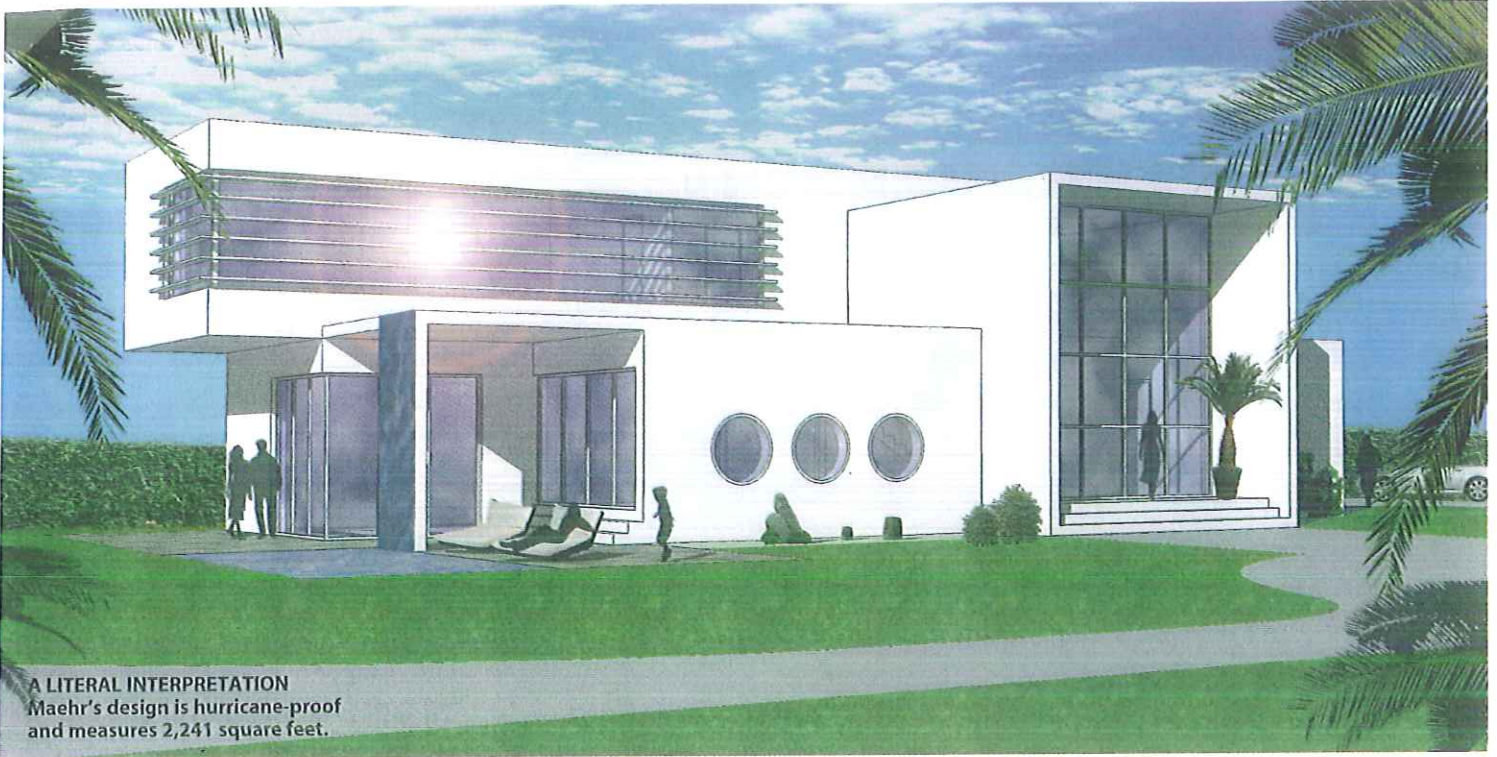
—Daniel Latour

**LIVING THE LIFE**  
Although Atzenhofer and Vanicek shrank the house by 2,835 square feet, the living, dining and family rooms were kept intact to maintain a certain living standard.



## SHRINK THIS HOUSE

Winning entry by Wolfgang Maehr



**A LITERAL INTERPRETATION**  
Maehr's design is hurricane-proof and measures 2,241 square feet.

"I didn't have this one on my list because it was very similar to some of the others and the portholes were a bit awkward. I would have made them more three-dimensional."

—*Sebastian Eilert*



### EYEING THE COMPETITION

Latour and Eilert review the entries before the panel discussion.

Latour openly supported Maehr's entry, which was noticeably similar to his own design. But when Brillhart interjected, with some disdain, "What about those windows?" Latour had a solution and laughed, "Oh, I can fix that."